



# Become a Certified Texas Teacher

## **ResponsiveEd 180**

Educator Preparation Program

### **Contact Us**



972-316-3663 ext. 180



[info@180epp.com](mailto:info@180epp.com)



[www.responsiveed180.com](http://www.responsiveed180.com)



1301 Waters Ridge Drive  
Lewisville, TX 75057



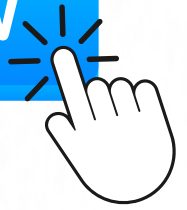
## Why ResponsiveEd 180

---

Our mission as your selected Educator Preparation Program is to cultivate diverse educators who inspire hope, model integrity, lead equitable classrooms, and provide students with a thoughtful exploration of content that prepares them for success in college, career, and life.

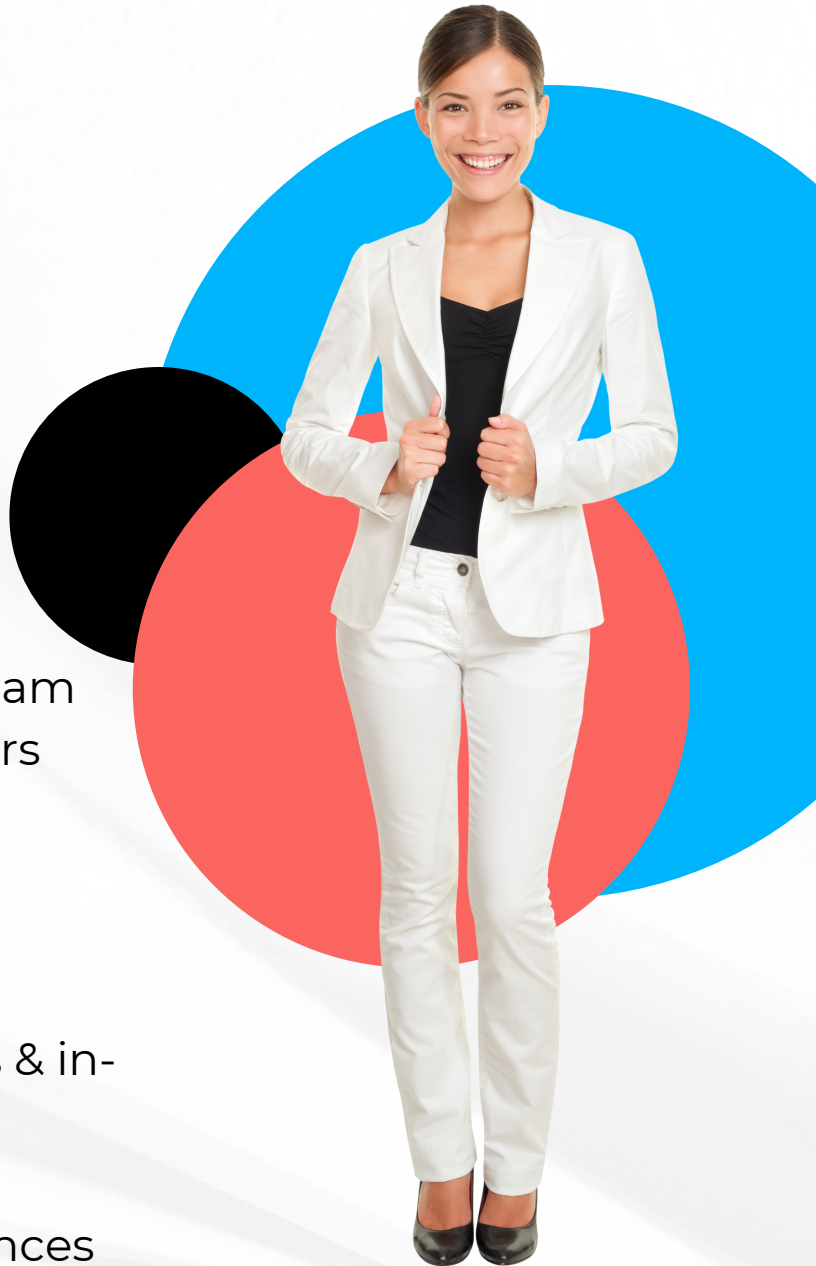
# Inspire hope with us

APPLY NOW



## What sets 180 EPP apart...

- **blended design**
  - approximately 50% online and 50% in-person
- **flexible hours**
  - designed for working adults
  - Saturday and weeknight sessions
- **cohort model**
  - complete the program with a group of peers
- **coaching & mentoring**
  - field supervision & mentoring support
- **test preparation**
  - online study guides & in-person sessions
- **classroom experience**
  - field-based experiences during pre-service
  - paid internship year





# 18 Month Program

## January-March

Enrollment & Online Coursework

## June-July

Secure Teaching Position & Intern Certificate

## June

Complete Program & Earn Standard Certificate

## September-December

Application & Program Acceptance

## April-May

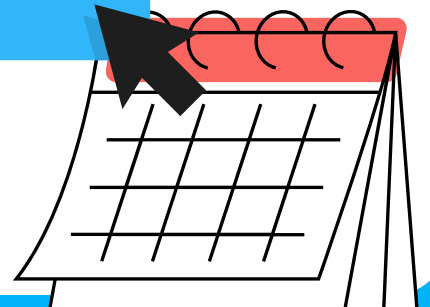
Pre-Service Training (online & in-person)

## August-June

Yearlong Paid Internship with ResponsiveEd

Online Coursework & In-Person Training Sessions

**Apply Now**





# inspire with us

## Pathway to Becoming Certified



### Enroll

After acceptance into the program, join the cohort and start your online coursework to engage in foundational pedagogical skills and knowledge



### Pre-Service

As you progress in coursework, you and your fellow cohort colleagues will get real-time experience in a ResponsiveEd classroom with students



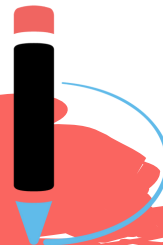
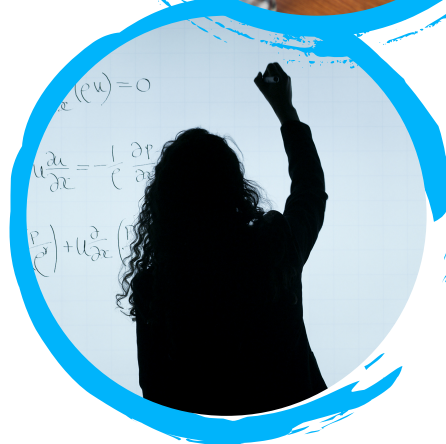
### Internship

Once you've completed your Pre-Service and program requirements, you can begin your internship year in the program as a teacher of record within a ResponsiveEd campus.

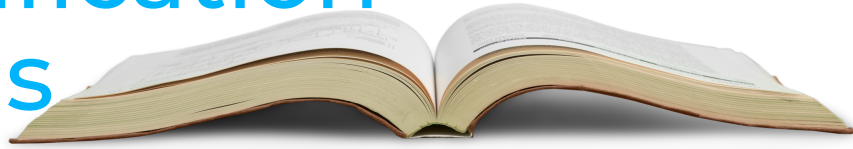


### Certification

With the successful completion of your year-long internship, program requirements, and TExES exams, you will apply and earn your Standard Texas Teacher Certificate



# Certification Areas



As a candidate within the ResponsiveEd 180 EPP, you will work towards earning one (1) of the following Texas teacher certifications:

- **Mathematics 4-8**
- **Science 4-8**
- **Core Subjects with Science of Teaching Reading: EC – 6**

All candidates in the program will complete certification requirements for the **English as a Second Language (ESL) Supplemental** certification *in addition to* their chosen content-specific certification area.



# Apply today for free

The application is now open for this upcoming Spring cohort.



[info@180epp.com](mailto:info@180epp.com)  
[www.responsiveed180.com](http://www.responsiveed180.com)

